

VB-M Series (Direct Fitting Bellows)

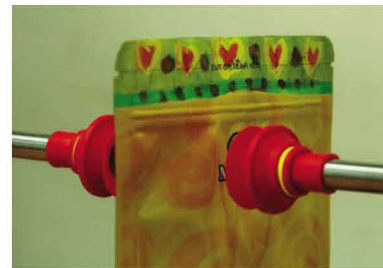
Features and Strengths

Same general advantages to that of the normal bellows cups but can be fitted directly onto a piece of pipe, thus making installation very simple and reducing cup costs to a minimum, very suitable for integration to packaging machines.



Suitable for Handling

- Cardboard
- Packaging Materials
- Thin Film Sheets
- Sheet Veneer
- Plastic Sheets



Order No.

VB30M N F
 ① ② ③

① Diameter

- VB20M – Ø20
- **VB30M** – Ø30
- VB50M – Ø50

② Material

- **N** – NBR (VB20M, VB30M, VB50M)
- S – Silicon (VB20M, VB30M, VB50M)
- HS – High Temp. Silicon (VB20M, VB30M, VB50M)
- WS – White Silicon (VB20M, VB30M, VB50M)
- CS – Conductive (Special mat'l) (VB20M, VB30M, VB50M)
- U – Urethane (VB20M, VB30M, VB50M)
- A – Mark Free (VB20M, VB30M, VB50M)
- PU – Poly Urethane (VB20M, VB30M, VB50M)
- WPU – Poly Urethane (Minimal mark)(VB20M, VB30M, VB50M)

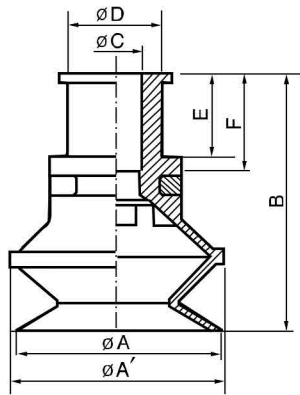
③ Filter

- no mark – Standard
- **F** – With filter(PE) (VB30M, VB50M)

Recommended (max.) lifting forces

Model	Volume (cm ³)	Lifting Force (kg) –Perpendicular		
		–20 kPa	–60 kPa	–90 kPa
VB20M	2.7	0.7	1.2	1.6
VB30M	10	1.5	2.6	3.9
VB50M	32	3.2	7.9	10.5

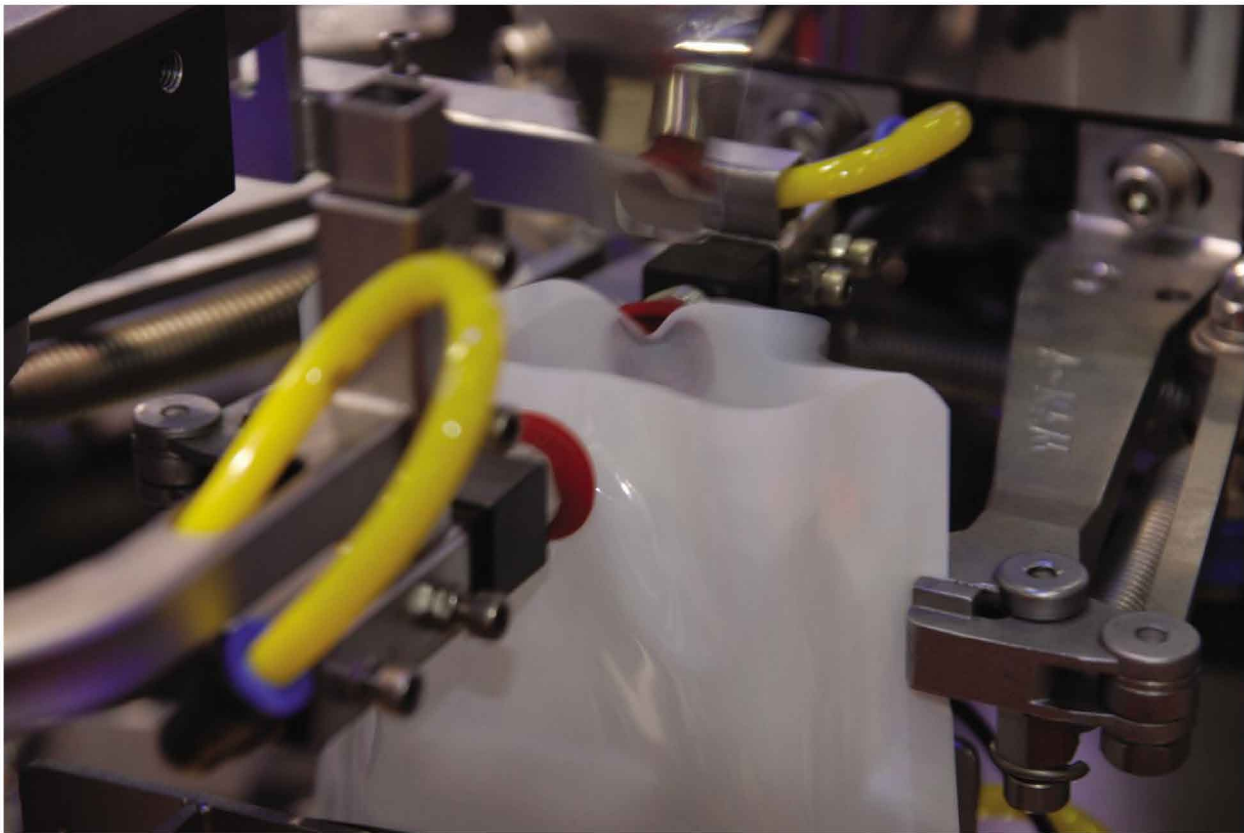
Dimensional Information



[mm]

Model	ØA	ØA'	ØC	ØD	E	F	B
VB20M	22	24	6	10	9	10,5	28
VB30M	34	36	8,5	14	14	16	40
VB50M	53	57	12,5	20	17	20	52

SUCTION CUPS



▲ Plastic pack opening / VTEC Bellows Cup - VB20M